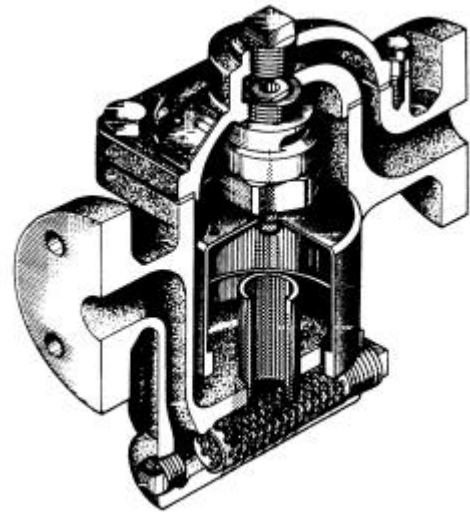


High Capacity Cast Iron Inverted Bucket Trap

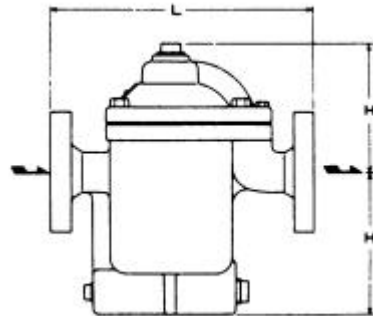
Features

1. Cast iron body and stainless steel internals.
2. Efficient energy conservation: will not leak live steam and prevents steam loss by the water seal inside the bucket.
3. No air and steam locking.
4. Very high durability by using the MIYAWAKI super lever and **SCCV** – System.
5. High capacity by using the MIYAWAKI Super Discharger.
6. Withstands high back pressure (up to 90 % of the inlet pressure).
7. Withstands vibration.
8. Easy maintenance – all internal parts can be taken out together with the cover.

ER 120



Operating Conditions & Dimensions

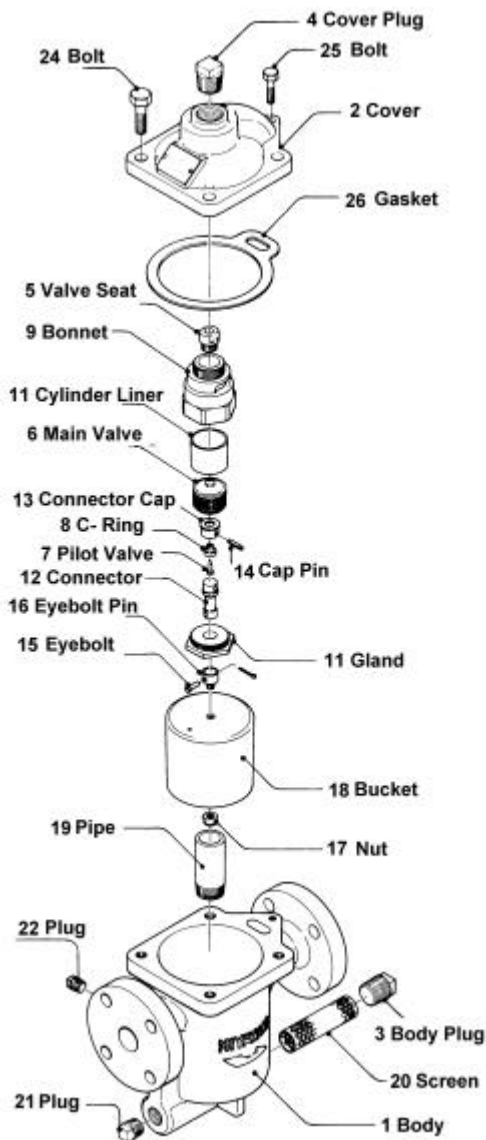


Model	Connec- tion	Size	Operating Pressure Range		Max. Operating Temperature		Dimension mm (inch)				Weight	
			MPa	psig	°C	°F	L	H ₁	H ₂	W	kg	lb
ER 120-8	flanged JIS, ANSI, DIN	1½" - 2½"	0,8	116	220	428	400 (15.8)	220 (8.7)	217 (8.5)	-	46,0	101.2
ER 120-16			1,6	230								

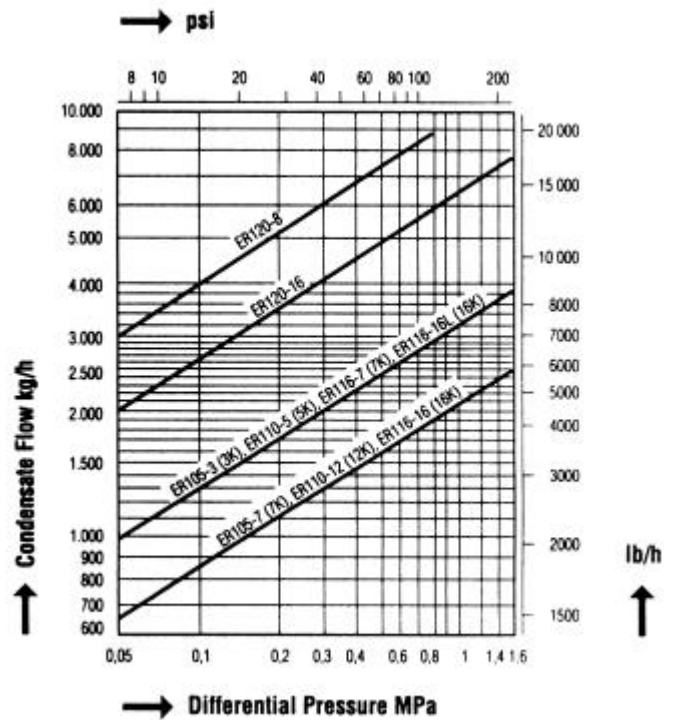
High Capacity Cast Iron Inverted Bucket Trap

ER 120

Details



Capacity Chart



Materials

Parts-No.	Name	Material JIS/ASTM
1	Body	FC 250
2	Cover	FC 250
5	Seat	SUS 403
6	Main valve	SUS 420J2
7	Pilot valve	SUS 420J2
18	Bucket	SUS 304
20	Screen	SUS 304
23	Bolts	SUS 304
24, 25	Bolts	S45C
26, 27	Gaskets	asbestos free