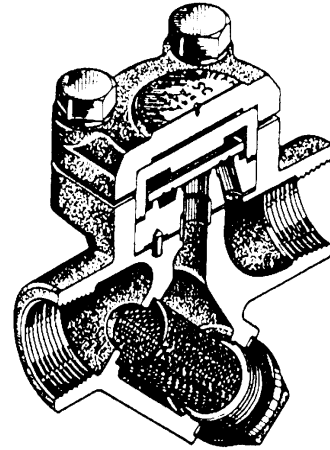


## High Capacity Thermodynamic Disc Steam Trap

### SC/SF

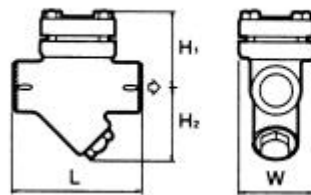
#### Features

1. Cast Iron Body and stainless steel internals.
2. Quick and efficient discharge of air and cold condensate upon start up.
3. With exchangeable seat and disc for easy maintenance.
4. Thermal insulation cap for energy conservation.
5. Inline reparability.
6. High durability.
7. For horizontal and vertical installation.

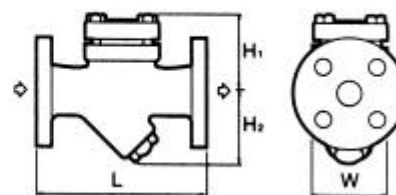


#### Operating Conditions & Dimensions

SC-310, 311, 312, 314, 315



SF-340, 341, 342, 344, 345

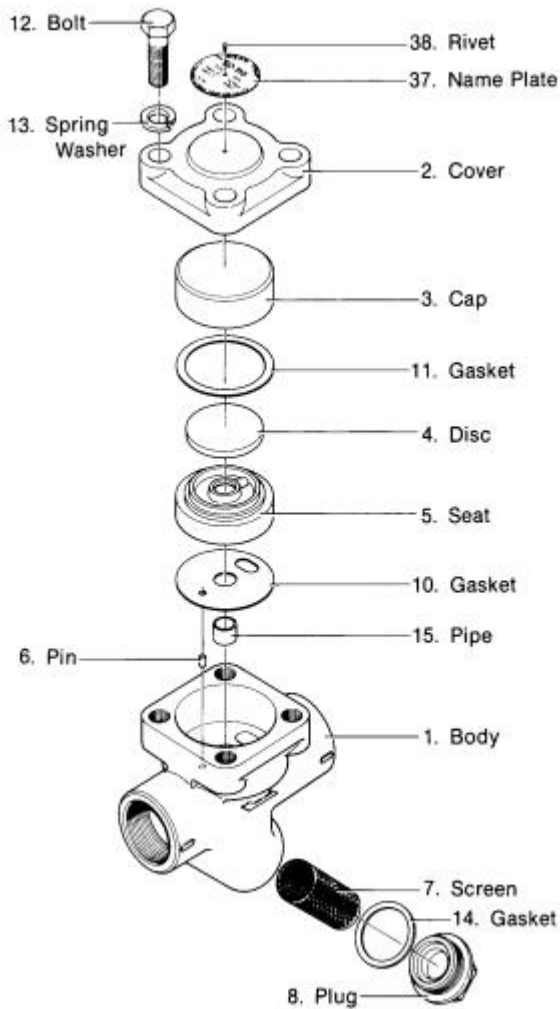


| Model | Connection           | Size | Operating Pressure Range |                 | Max. Operating Temperature |     | Dimension mm (inch) |                |                |             | Weight |      |      |      |      |
|-------|----------------------|------|--------------------------|-----------------|----------------------------|-----|---------------------|----------------|----------------|-------------|--------|------|------|------|------|
|       |                      |      | MPa                      | psig            | °C                         | °F  | L                   | H <sub>1</sub> | H <sub>2</sub> | W           | kg     | lb   |      |      |      |
| 310   | screwed<br>Rc, NPT   | ¾"   | 0,03<br>-<br>1,6         | 4.4<br>-<br>230 | 220                        | 428 | 180<br>(7.1)        | 95<br>(3.7)    | 75<br>(3.0)    | 96<br>(3.8) | 6,0    | 13.2 |      |      |      |
| 311   |                      | 1"   |                          |                 |                            |     |                     | 100<br>(3.9)   | 106<br>(4.2)   | 8,0         |        |      | 17.7 |      |      |
| 312   |                      | 1 ¼" |                          |                 |                            |     |                     |                |                |             |        |      |      | 8,7  | 19.2 |
| 314   |                      | 1 ½" |                          |                 |                            |     |                     |                |                |             |        |      |      |      |      |
| 315   |                      | 2"   |                          |                 |                            |     |                     |                |                |             |        |      |      | 9,3  | 20.5 |
| 310   | flanged<br>JIS, ANSI | ¾"   | 0,03<br>-<br>1,6         | 4.4<br>-<br>230 | 220                        | 428 | 240<br>(9.5)        | 95<br>(3.7)    | 75<br>(3.0)    | 96<br>(3.8) | 10,0   | 22.1 |      |      |      |
| 311   |                      | 1"   |                          |                 |                            |     |                     | 100<br>(3.9)   | 106<br>(4.2)   | 12,0        |        |      | 26.5 |      |      |
| 312   |                      | 1 ¼" |                          |                 |                            |     |                     |                |                |             |        |      |      | 13,5 | 29.8 |
| 314   |                      | 1 ½" |                          |                 |                            |     |                     |                |                |             |        |      |      |      |      |
| 315   |                      | 2"   |                          |                 |                            |     |                     |                |                |             |        |      |      | 14,5 | 32.0 |

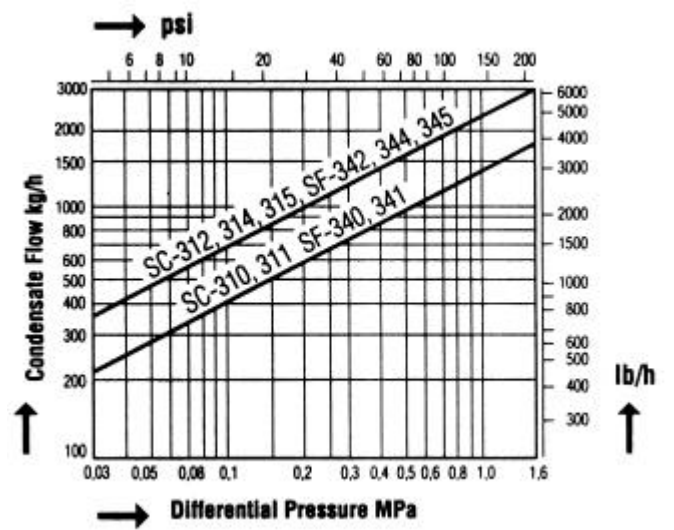
## High Capacity Thermodynamic Disc Steam Trap

# SC/SF

### Details



### Capacity Chart



### Materials

| Parts-No. | Name    | Material JIS/ASTM |
|-----------|---------|-------------------|
| 1         | Body    | FC 250            |
| 2         | Cover   | FC 250            |
| 3         | Cap     | SUS 420J2         |
| 4         | Disc    | SUS 420J2         |
| 5         | Seat    | SUS 420J2         |
| 6         | Pin     | SUS 303           |
| 7         | Screen  | SUS 304           |
| 8         | Plug    | FC 250            |
| 10,11,14  | Gaskets | asbestos free     |
| 12        | Bolts   | SS 400            |
| 15        | Pipe    | SUS 304           |