

Temperature Control Bimetallic Steam Trap

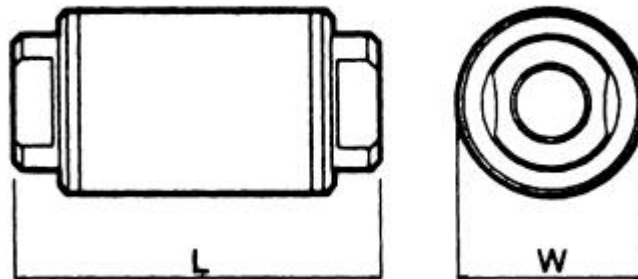
Features

1. Small and compact in size adjustable steam trap especially for tracing lines – the opening temperature of the trap (temperature of the discharged condensate) can be adjusted between 50 and 90°C (122 – 194°F).
2. Highly efficient in energy conservation – eliminates virtually 100% of steam loss.
3. Continuous discharge of the condensate according to the adjusted temperature – not influenced by inlet pressure changes.
4. Can be installed in any position.

TB 1N



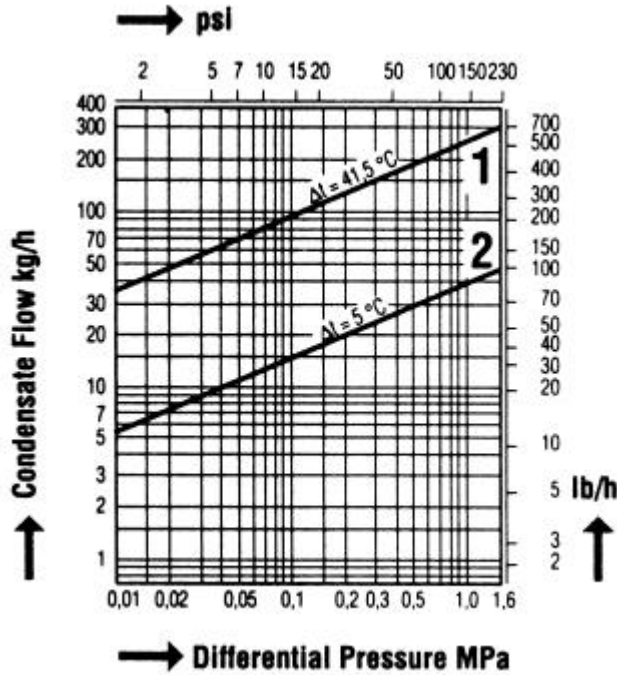
Operating Conditions & Dimensions



Model	Connection	Size	Max. Operating Pressure		Max. Operating Temperature		Dimension mm (inch)				Weight	
			MPa	psig	°C	°F	L	H ₁	H ₂	W	kg	lb
TB 1N	Screwed Rc, NPT	1/4", 3/8"	1,6	230	350	662	70 (2.8)	-	-	38 (1.5)	0,8	1.8

Temperature Control Bimetallic Steam Trap

TB 1N



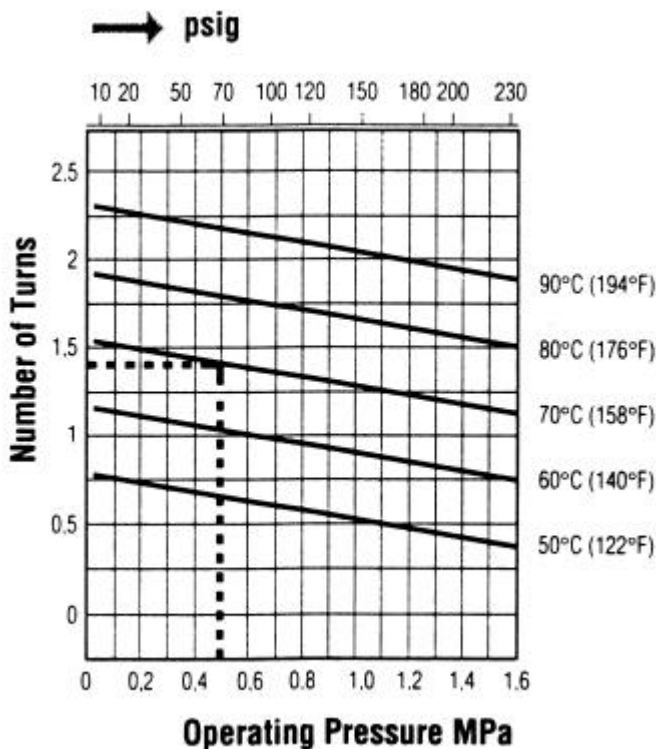
Capacity Chart

Curve 1

shows the traps maximum capacity when discharging cold condensate at a temperature of 20°C (68°F).

Curve 2

shows the traps maximum capacity when discharging hot condensate at a temperature of 5°C (9°F) below the adjusted temperature of the trap.



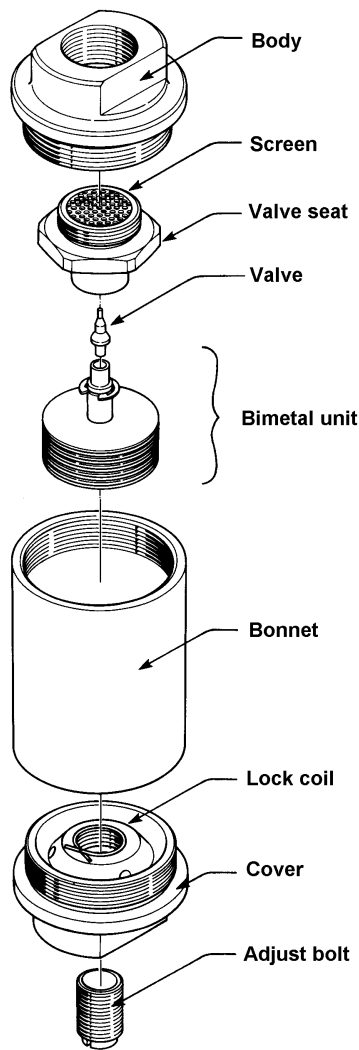
Stroke Chart

The dashed Line shows the standard factory setting

Temperature Control Bimetallic Steam Trap

TB 1N

Details



Materials

Parts-No.	Name	Material JIS/ASTM
1	Body	S25C (C-Steel)
2	Bonnet	STPG370
3	Cover	S25C (C-Steel)
4	Valve seat	SUS 304
5-7, 9-13	Valve & Bimetal Unit	Stainless steel/ Special Alloy
8	Screen	SUS 304
14	Spring	SUS 304