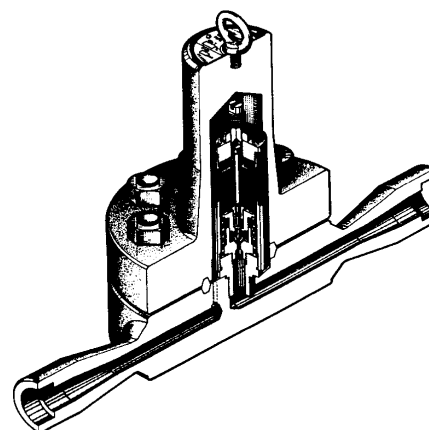


High Pressure Temperature Control Bimetallic Steam Trap

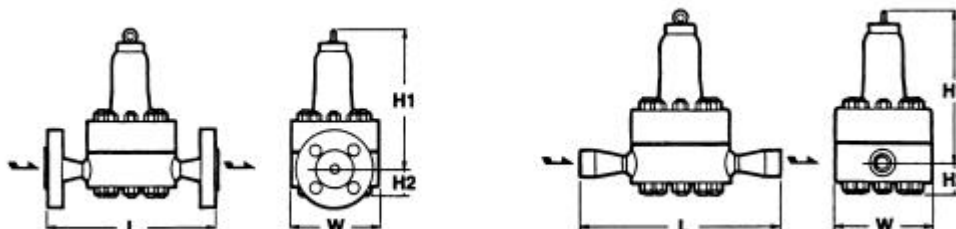
TB 72, TB 82

Features

1. Adjustable steam trap – the opening temperature of the trap (temperature of the discharged condensate) can be adjusted between 100 and 320°C (212 – 608°F).
2. Highly efficient in energy conservation – eliminates virtually 100% of steam loss.
3. Not influenced by inlet pressure changes.
4. Due to the Self-Closing and Centering Valve („SCCV“) – System
 - extended service life,
 - precise alignment of valve and seat.
5. Inline repairability.
6. Can be installed in any position.



Operating Conditions & Dimensions



Model	Connection	Size	Max. Operating Pressure		Adjustable Temper. Range		Max. Operating Temper.		Dimension mm (inch)				Weight	
			MPa	psig	°C	°F	°C	°F	L	H ₁	H ₂	W	kg	lb
TB72-80W	socket weld JIS, ANSI, DIN	½ – 1"	1,0 - 7,8	145 - 1,130	100 - 260	212 - 500	550	1022	400 (15.7)	273 (10.7)	50 (2.0)	180 (7.1)	17,0	37.4
TB72-105W			1,0 - 10,3	145 - 1,500	100 - 280	212 - 536								
TB72-80F	flanged JIS, ANSI, DIN	½ – 1"	1,0 - 7,8	145 - 1,130	100 - 300	212 - 572							25,0	55.0
TB72-105F			1,0 - 10,3	145 - 1,500	100 - 320	212 - 608								
TB82-150W	socket weld JIS, ANSI, DIN	½ – 1"	2,0 - 14,7	290 - 2,130	100 - 260	212 - 500			400 (15.7)	282 (11.1)	60 (2.4)	190 (7.5)	37,0	81.4
TB82-200W			2,0 - 19,6	290 - 2,840	100 - 280	212 - 536			465 (18.3)	310 (12.2)	75 (3.0)	235 (9.3)	72,0	158.4
TB82-150F	flanged JIS, ANSI, DIN	½ – 1"	2,0 - 14,7	290 - 2,130	100 - 300	212 - 572			400 (15.7)	282 (11.1)	60 (2.4)	190 (7.5)	47,0	103.4
TB82-200F			2,0 - 19,6	290 - 2,840	100 - 320	212 - 608			465 (18.3)	310 (12.2)	75 (3.0)	235 (9.3)	82,0	180.4

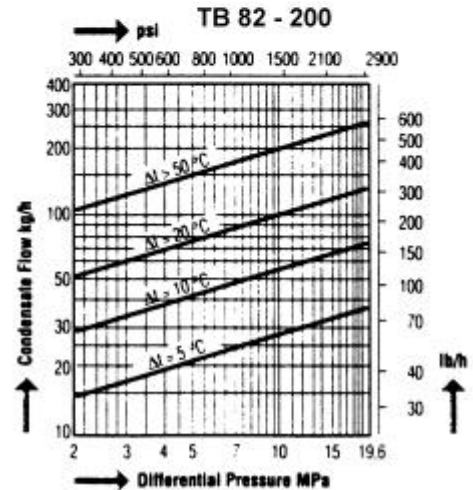
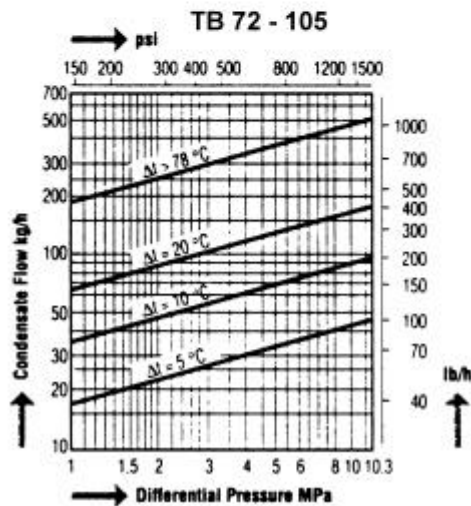
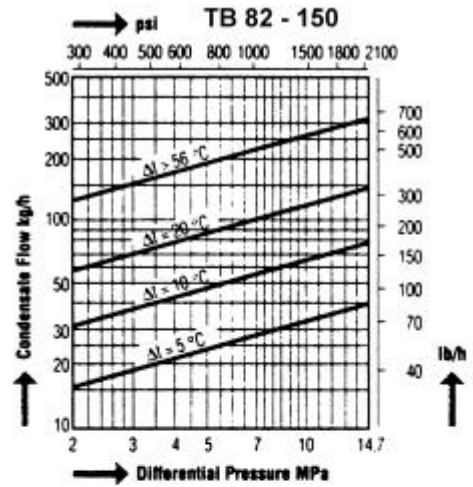
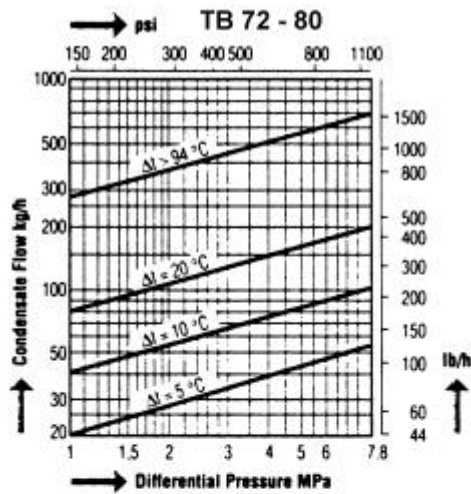
MIYAWAKI

®

High Pressure Temperature Control Bimetallic Steam Trap

TB 72, TB 82

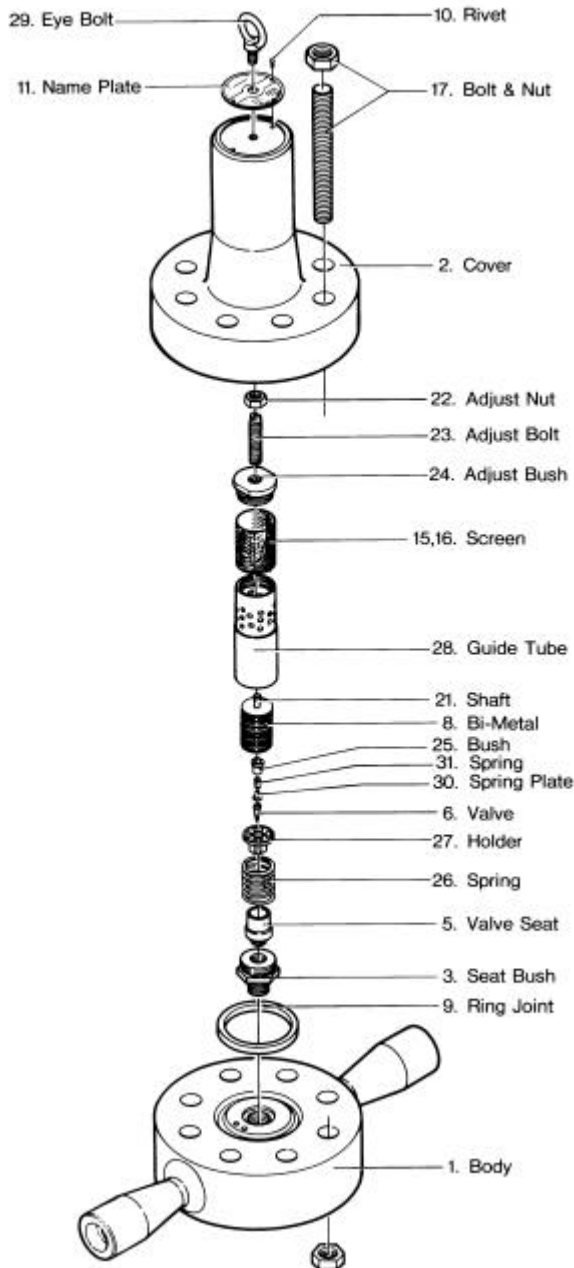
Capacity Charts



High Pressure Temperature Control Bimetallic Steam Trap

TB 72, TB 82

Details



Materials

Parts-No.	Name	Material JIS/ASTM
1	Body	A 182 F 22
2	Cover	A 182 F 22
3-8,21, 25,27	Valve and Bimetal unit	Stainless steel/ Special alloy
26	Spring	Special alloy
22,23	Adjust bolt & nut	SUS304
15	Screen	SUS 304
9	Cover gasket	asbestos free
17,18	Cover bolts and nuts	A193B16/ A194 Gr.4