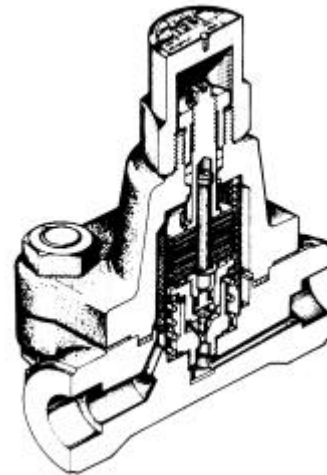


High Pressure Temperature Control Bimetallic Steam Trap

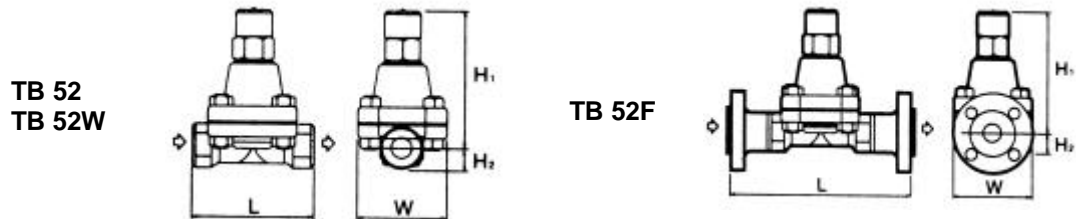
TB 52

Features

- Adjustable steam trap – the opening temperature of the trap (temperature of the discharged condensate) can be adjusted between 100 and 240°C (212 – 464°F).
- Highly efficient in energy conservation – eliminates virtually 100% of steam loss.
- Not influenced by inlet pressure changes.
- Due to the Self-Closing and Centering Valve („SCCV“) – System
 - extended service life,
 - precise alignment of valve and seat.
- Inline reparability.
- Can be installed in any position.



Operating Conditions & Dimensions



Model	Connection	Size	Max. Operating Pressure		Max. Operating Temperature		Dimension mm (inch)				Weight	
			MPa	psig	°C	°F	L	H ₁	H ₂	W	kg	lb
TB52 - 45	screwed Rc, NPT	½" – 1"	4,4	640	475	887	130	156	25	100	5,0	11.1
TB52 - 65			6,4	925			(5.1)	(6.1)	(1.0)	(3.9)		
TB52W - 45	socket weld JIS, ANSI, DIN	½" – 1"	4,4	640			130	156	25	100	5,0	11.1
TB52W - 65			6,4	925			(5.1)	(6.1)	(1.0)	(3.9)		
TB52F - 45	flanged JIS, ANSI, DIN	½" – 1"	4,4	640			Ref. Table 1	156	25	100	Ref. Table 1	
TB52F - 65			6,4	925								

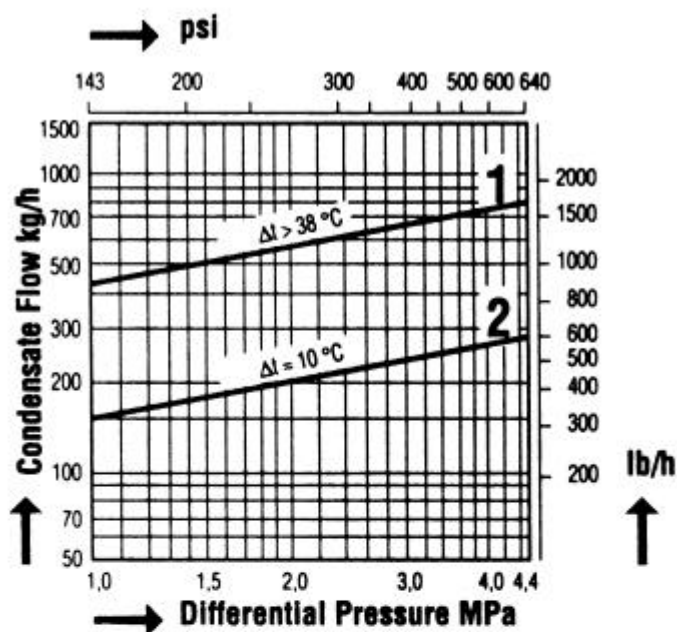
Table 1 : Face-to-face dimensions and weights

Model	Size	JIS 20-40K ANSI 150,300 lb		ANSI 600 lb		JIS 63K ANSI 900 lb		DIN PN 63, PN 100	
		mm (inch)	kg (lb)	mm (inch)	kg (lb)	mm (inch)	kg (lb)	mm (inch)	kg (lb)
TB52F - 45 and TB52F - 65	½"	200 (7.9)	8,0 (17.6)	200 (7.9)	8,8 (19.4)	220 (8.7)	8,8 (19.4)	210 (8.3)	8,8 (19.4)
	¾"	210 (8.3)	8,3 (18.3)	210 (8.3)	10,2 (22.4)	230 (9.1)	10,2 (22.4)	210 (8.3)	10,2 (22.4)
	1"	240 (9.4)	9,7 (21.3)	240 (9.4)	11,2 (24.6)	240 (9.4)	11,2 (24.6)	230 (9.1)	11,0 (24.2)

High Pressure Temperature Control Bimetallic Steam Trap

TB 52

TB 52-45

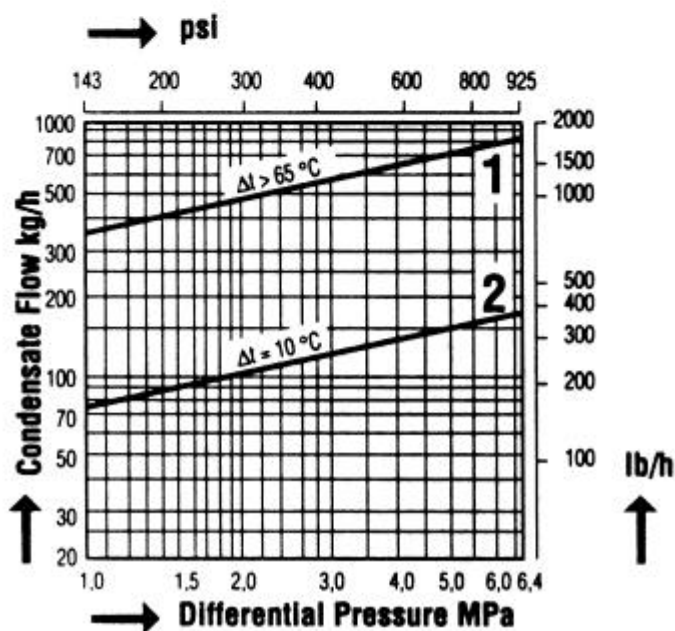


Capacity Chart

Curve 1
shows the traps maximum capacity when discharging cold condensate at a temperature of 20°C (68°F).

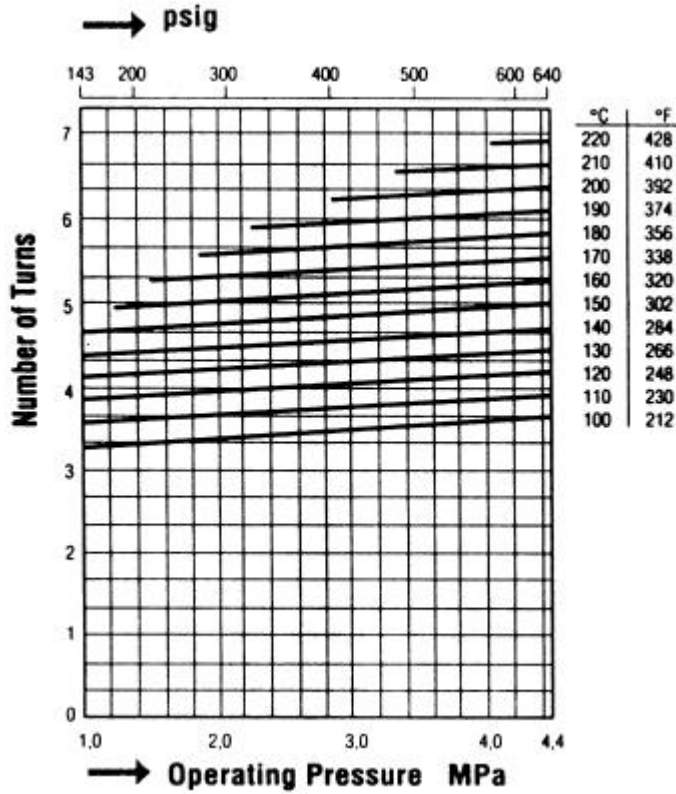
Curve 2
shows the traps maximum capacity when discharging hot condensate at a temperature of 10°C (18°F) below the adjusted temperature of the trap.

TB 52-65



High Pressure Temperature Control Bimetallic Steam Trap

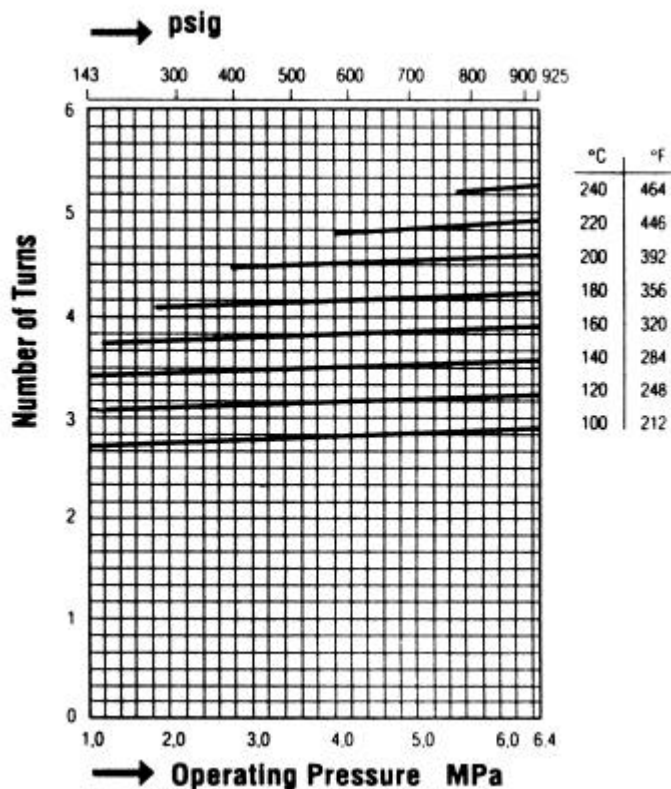
TB 52



**Stroke Chart
TB 52 - 45**

**Standard Factory
Setting:**

180°C (356°F) at
2,1 MPa (305 psig)



**Stroke Chart
TB 52 - 65**

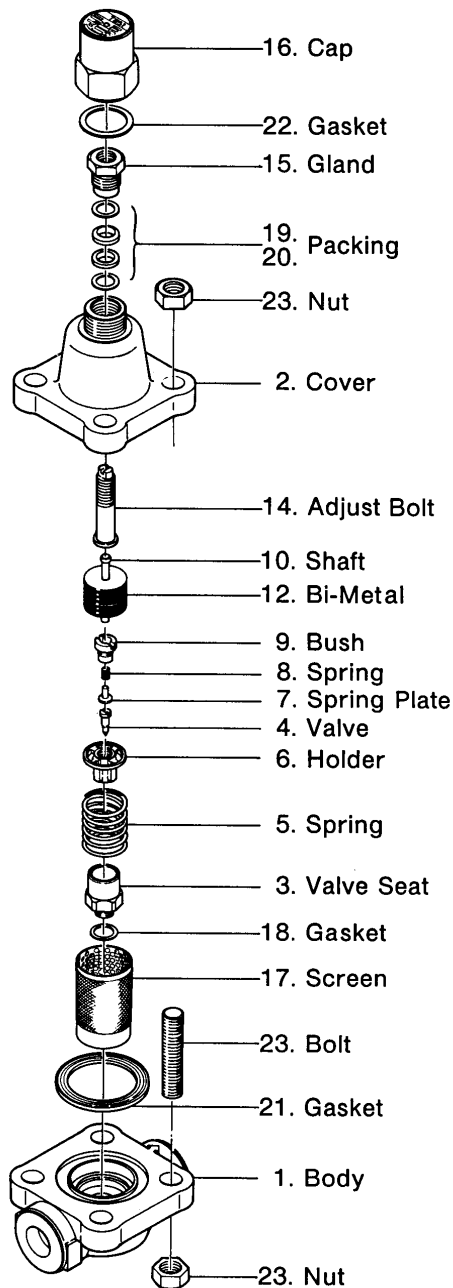
**Standard Factory
Setting:**

220°C (428°F) at
4,4 MPa (640 psig)

High Pressure Temperature Control Bimetallic Steam Trap

TB 52

Details



Materials

Parts-No.	Name	Material JIS/ASTM
1	Body	A 182 F22
2	Cover	A 182 F22
3,4,6-9	Valve unit	Stainless steel/ Special Alloy
5	Spring	Special Alloy
10 - 13	Bimetal Unit	Stainless steel/ Special Alloy
14	Adjust bolt	SUS420J2
15	Gland	SUS 304
16	Cap	S45C
17	Screen	SUS 304
18	Seat Gasket	asbestos free
19, 20	Adjust packing	asbestos free
21, 22	Gaskets	asbestos free
23	Cover bolts and nuts	B16 Gr.4