

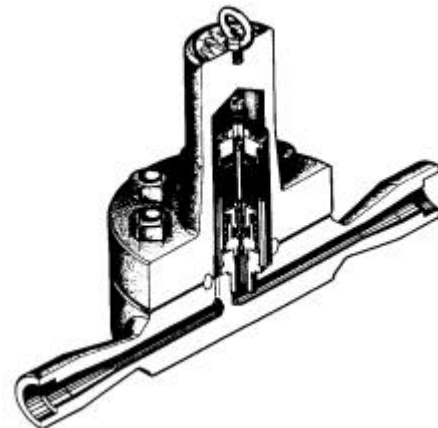
## High Pressure Temperature Control Bimetallic Steam Trap

### TB 71, TB 81

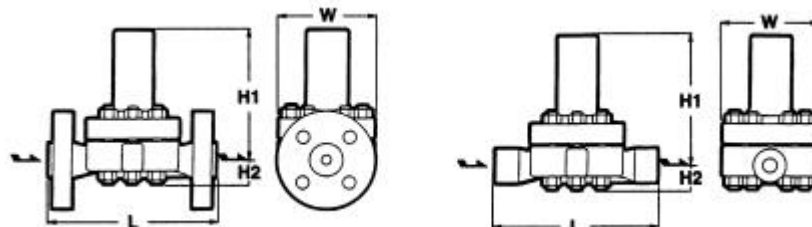
#### Features

1. Adjustable steam trap – the opening temperature of the trap (temperature of the discharged condensate) can be adjusted between 100 and 320°C (212 – 608°F).
2. Highly efficient in energy conservation – eliminates virtually 100% of steam loss.
3. Not influenced by inlet pressure changes.
4. Due to the Self-Closing and Centering Valve („SCCV“) – System
  - extended service life,
  - precise alignment of valve and seat.
5. Inline repairability.
6. Can be installed in any position.

TB 81



#### Operating Conditions & Dimensions

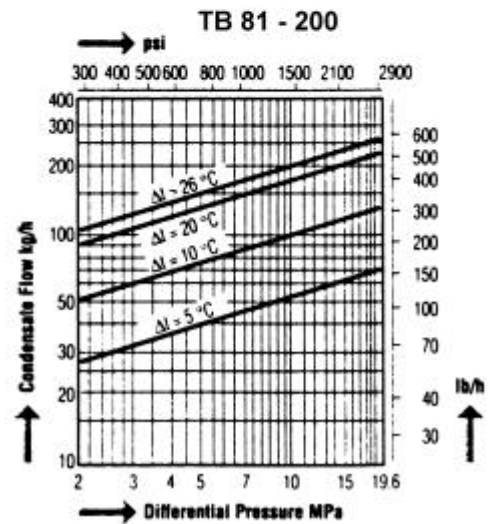
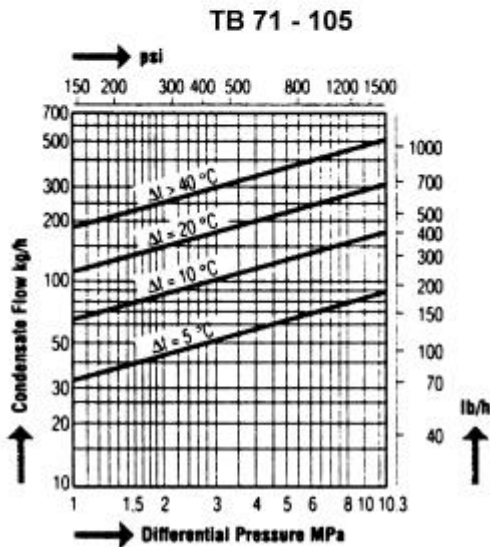
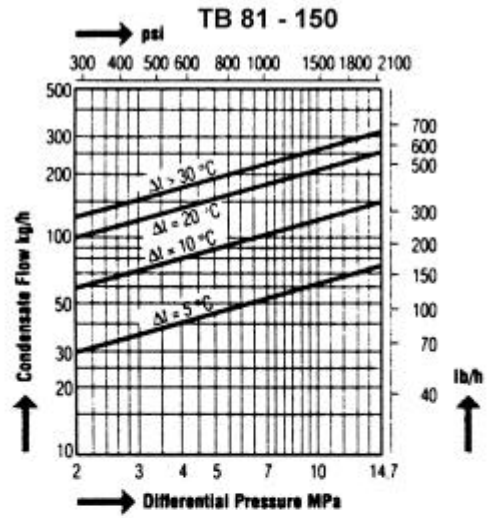
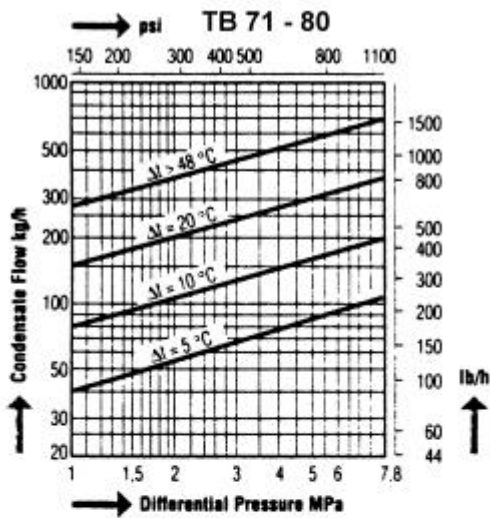


Model	Connection	Size	Max. Operating Pressure		Adjustable Temper. Range		Max. Operating Temper.		Dimension mm (inch)				Weight	
			MPa	psig	°C	°F	°C	°F	L	H <sub>1</sub>	H <sub>2</sub>	W	kg	lb
TB71-80W	socket weld JIS, ANSI, DIN	½ – 1"	1,0-7,8	145 - 1,130	100 – 260	212 – 500	470	878	250 (9.8)	201 (7.9)	36 (1.4)	145 (5.9)	15,0	33.0
TB71-105W			1,0-10,3	145 - 1,500	100 – 280	212 – 536								
TB71-80F	flanged JIS, ANSI, DIN	½ – 1"	1,0-7,8	145 - 1,130	100 – 300	212 – 572			260 (10.2)	201 (7.9)	36 (1.4)	145 (5.9)	20,0	44.0
TB71-105F			1,0-10,3	145 - 1,500	100 – 320	212 – 608								
TB81-150W	socket weld JIS, ANSI, DIN	½ – 1"	2,0-14,7	290 - 2,130	100 – 260	212 – 500			400 (15.7)	268 (10.5)	45 (1.8)	180 (7.1)	31,0	68.4
TB81-200W			2,0-19,6	290 - 2,840	100 – 280	212 – 536								
TB81-150F	flanged JIS, ANSI, DIN	½ – 1"	2,0-14,7	290 - 2,130	100 – 300	212 – 572							38,0	83.8
TB81-200F			2,0-19,6	290 - 2,840	100 – 320	212 – 608								

## High Pressure Temperature Control Bimetallic Steam Trap

### TB 71, TB 81

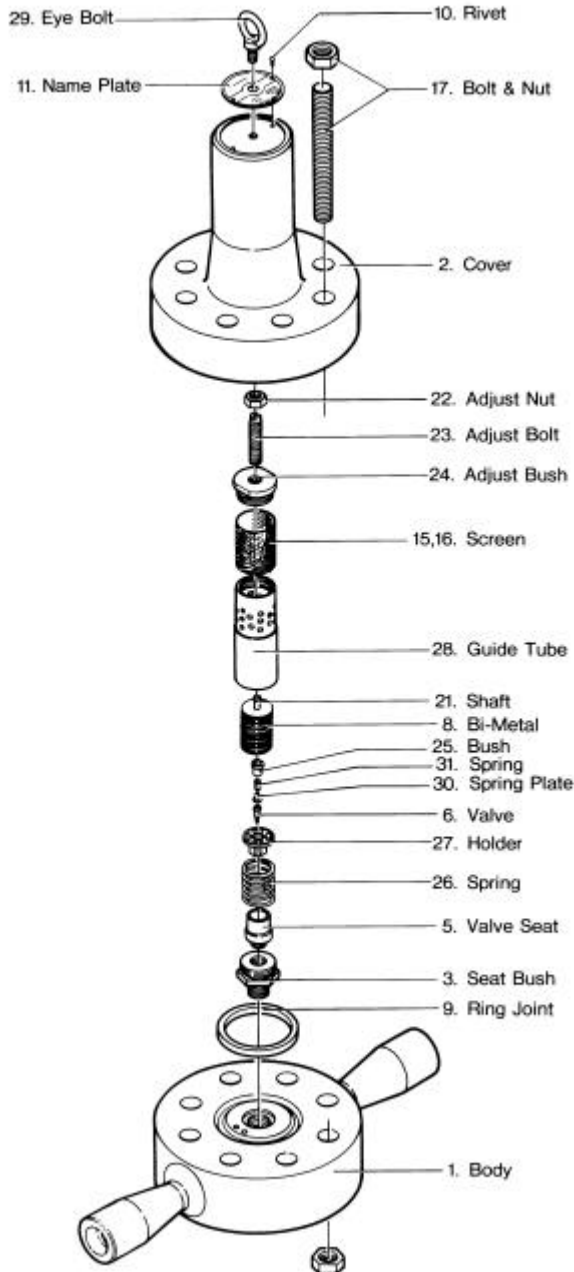
#### Capacity Charts



## High Pressure Temperature Control Bimetallic Steam Trap

### TB 71, TB 81

#### Details



#### Materials

Parts-No.	Name	Material JIS/ASTM
1	Body	WC6 (TB 71) F 12 (TB 81)
2	Cover	WC6 (TB 71) F 12 (TB 81)
3-8,21, 25,27	Valve and Bimetal unit	Stainless steel/ Special alloy
26	Spring	Special alloy
22,23	Adjust bolt & nut	SUS304
15	Screen	SUS 304
9	Cover gasket	asbestos free
17,18	Cover bolts and nuts	A193B16/ A194 Gr.4